



Made for ideas.

ESATA HUB THUNDERBOLT™ SERIES USER MANUAL



CLICK [HERE](#) TO ACCESS AN **UP-TO-DATE ONLINE VERSION**

of this document. Online User Manuals feature expandable illustrations, easier navigation, and search capability.



INTRODUCTION

Welcome to the User Manual for the LaCie eSATA Hub Thunderbolt™* Series. With theoretical transfer rates that can reach up to 10Gb/s, the eSATA Hub is the perfect adapter for your eSATA drives. Attach two eSATA enclosures to a single eSATA Hub for newfound speed and performance. For enhanced storage capacity, daisy chain additional eSATA Hubs to attach all your eSATA enclosures. Ideal for professionals that have invested heavily in eSATA disks, the eSATA Hub helps you repurpose and future-proof existing storage. Video editors, graphic artists, and photographers can get the most from their current hard drives thanks to the incredible throughput offered by the LaCie eSATA Hub Thunderbolt Series. Further, eSATA can now be used with all next generation Macintosh computers that support Thunderbolt technology, including MacBook Pros, MacBook Airs, and iMacs.



This manual will guide you through the process of connecting your LaCie eSATA Hub and explain its features. For questions on installation or usage, please consult the [Getting Help](#) page.

BOX CONTENT

- LaCie eSATA Hub Thunderbolt Series
- Power supply
- eSATA Hub stand for a vertical position
- Quick Install Guide

Note: Visit www.lacie.com for details on cables that support Thunderbolt technology.

Important info: Please save your packaging. In the event that the eSATA hub should need to be repaired or serviced, it must be returned in its original packaging.

MINIMUM SYSTEM REQUIREMENTS

Your system must meet certain requirements in order for your LaCie product to function properly. For a list of these requirements, please refer to the product packaging or consult the product support web page at www.lacie.com/support/.

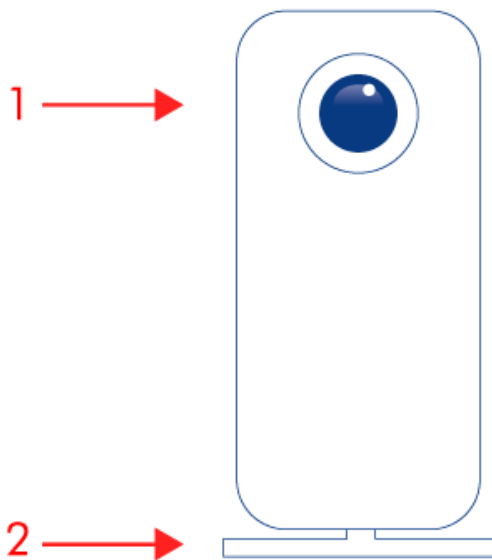
* Thunderbolt and the Thunderbolt logo are trademarks of Intel Corporation in the U.S. and/or other countries.

Thunderbolt technology connection:

The eSATA Hub Thunderbolt Series must be connected to a Macintosh computer that supports Thunderbolt technology.

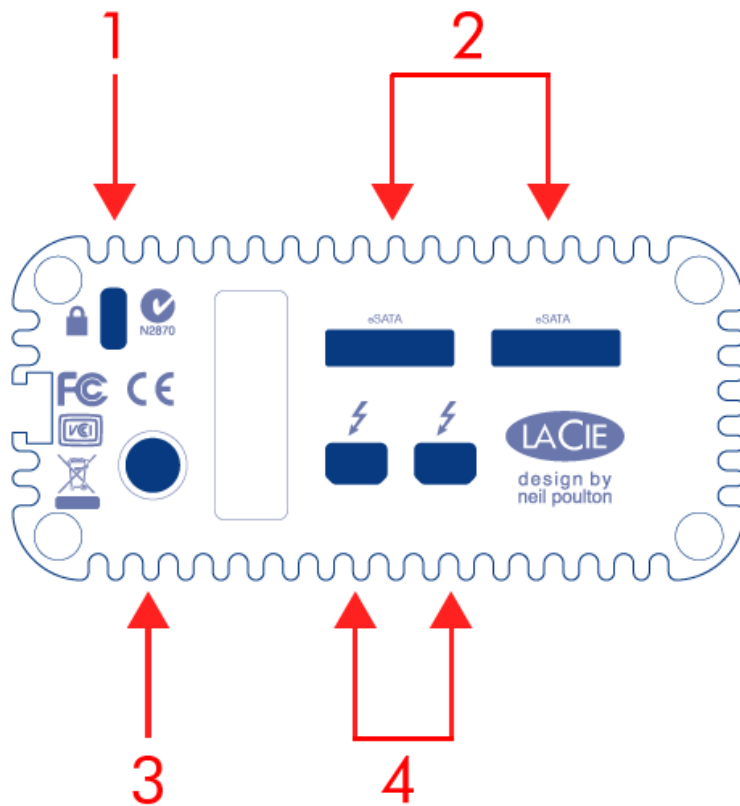
VIEWS OF THE DRIVE

Front View



1. Activity LED
2. Removable stand

Rear View



1. Chain lock option
2. eSATA ports
3. Power supply connection (12V 2A)
4. Thunderbolt technology ports

POSITION AND STACKING

The LaCie eSATA Hub Thunderbolt Series may be kept at a vertical or a horizontal position.

- Use the removable stand for a vertical position.
- Place the device on its side for a horizontal position.

LaCie does not support stacking multiple eSATA Hubs. Stacking your eSATA Hub will void the warranty.




RECEIVING POWER/LED

RECEIVING POWER

To receive power, the eSATA Hub Thunderbolt Series must be:

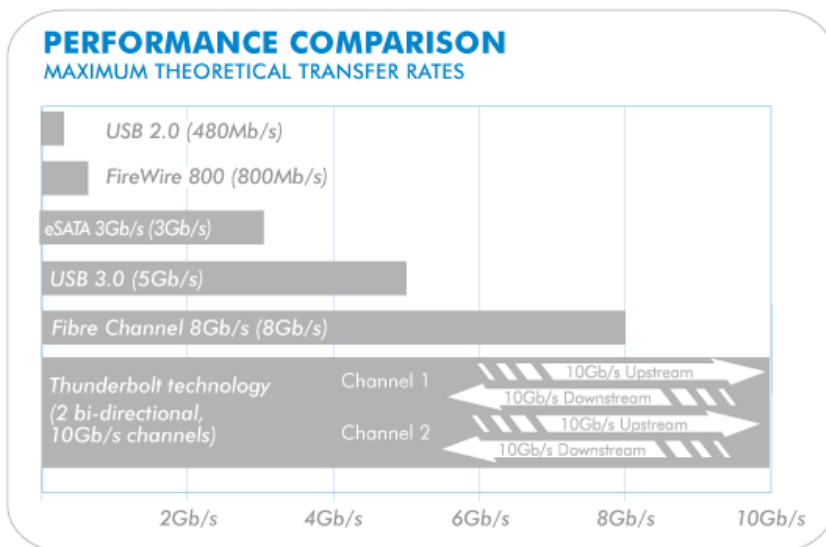
1. Connected to a Macintosh computer that is compatible with Thunderbolt technology
2. Connected to a power source via the included power supply

LED STATES

LED Behavior	State
	The product is in active mode, working properly and waiting for data access.
	The product is starting up. The LED will become solid blue once it has initialized.
	External disk access
Off	The product is: turned off; not receiving power; not connected to a Macintosh computer that supports Thunderbolt technology; experiencing system failure; or, experiencing electronic board failure. If the device is connected to a power supply and turned on but the LED remains off, contact LaCie Customer Support .

THUNDERBOLT TECHNOLOGY AND DAISY CHAIN

THUNDERBOLT TECHNOLOGY

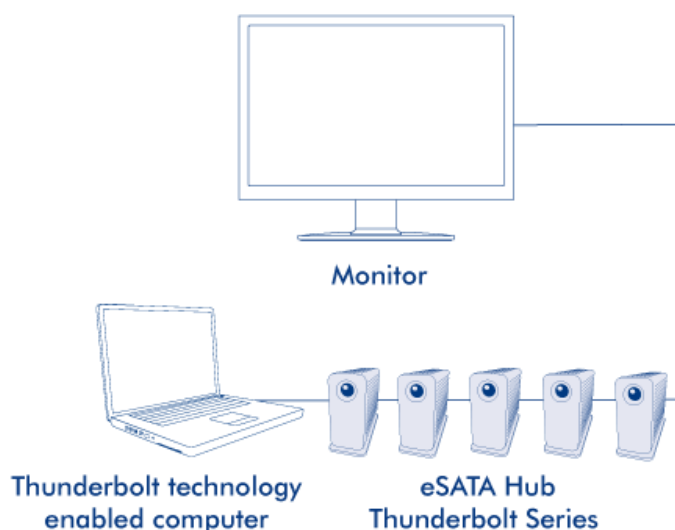


Thunderbolt technology is an active cable technology with extraordinary promise. A single Thunderbolt technology connection includes two bi-directional streams, each with a potential bandwidth of up to 10Gb/s. As the illustration demonstrates, the streams run in opposite directions to support simultaneous operations: one bi-directional stream for data operations and another bi-directional stream for video operations. For example, files can be copied (upstream) while playing back an HD film from your computer (downstream). Certainly, it is possible to perform both actions with existing interface technologies but not at the speeds offered by a Thunderbolt technology connection. See the comparison in the illustration.

While maximum theoretical transfer rates are rarely sustained, it is no less impressive to imagine the amount of high-end data that can be passed to and from your LaCie eSATA Hub.

THUNDERBOLT TECHNOLOGY DAISY CHAIN

THUNDERBOLT DAISY CHAIN



The back of the LaCie eSATA Hub Thunderbolt Series features two Thunderbolt technology ports for:

- Direct connection to a Thunderbolt technology compatible Macintosh computer
- Daisy chaining Thunderbolt compatible devices

Connect the cable to one of the interface ports on the back of your LaCie eSATA Hub and to your Macintosh computer. The additional Thunderbolt port may be used to daisy chain compatible computer peripherals, such as additional eSATA Hubs, hard drives, monitors, and much more. A single Thunderbolt technology line can have seven devices, including the computer. Consider the potential speed and availability of storage when daisy chaining six eSATA Hubs for a total of 12 eSATA enclosures.

Important cable info: When connecting your eSATA Hub Thunderbolt Series to a computer or compatible devices, please use cables specifically constructed to support Thunderbolt technology. Go to www.lacie.com for further information on cables.

Important info: The eSATA Hub Thunderbolt Series must be connected to a Macintosh computer that supports Thunderbolt technology. While the ports on the back of the device can easily seat Mini DisplayPort cable ends, the eSATA Hub will not work when it is connected to a computer that does not support Thunderbolt technology.

GETTING CONNECTED

Please follow the setup steps in the order they are given to ensure that the eSATA drives mount correctly on your computer.

Important Info: If your LaCie eSATA drive features an “Auto” power mode, please do not use it.

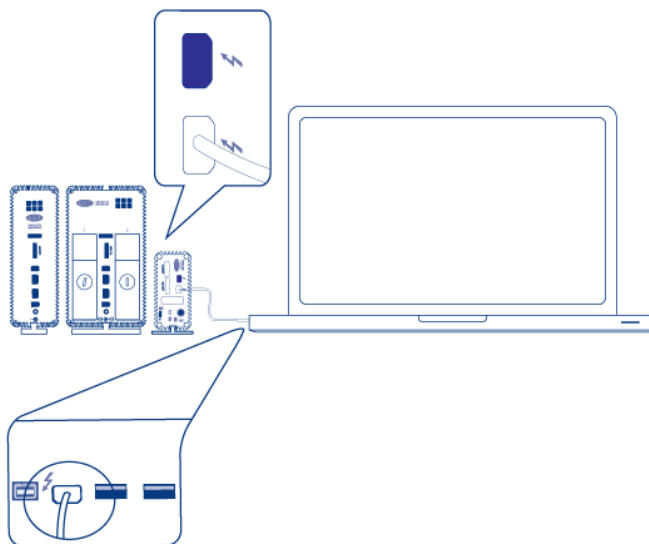
COMPATIBLE DEVICES

Most storage with eSATA ports can be connected to the LaCie eSATA Hub. The table below offers a list of LaCie hard drive enclosures that are perfect for your eSATA Hub.

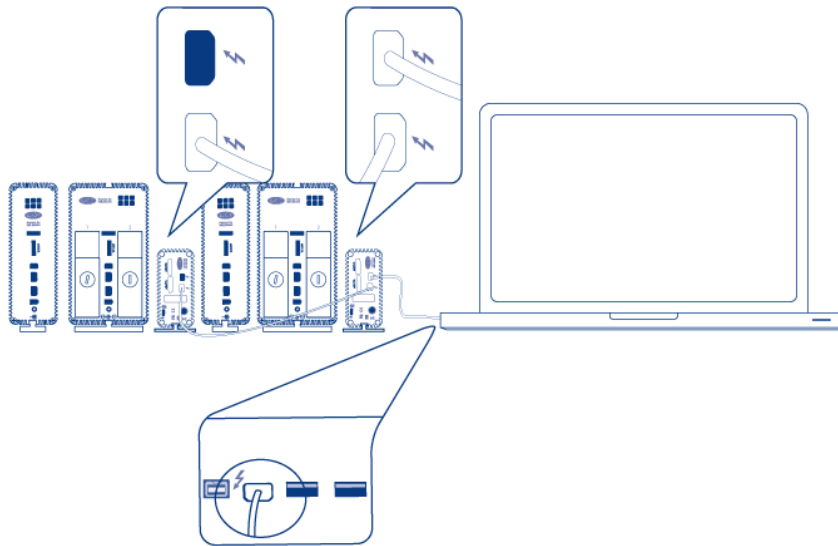
LaCie storage with a compatible eSATA 3Gb/s interface
LaCie d2 Quadra
LaCie Big Disk Quadra
LaCie 2big Quadra
LaCie 4big Quadra

CONNECT THE INTERFACE CABLE

1. Connect a cable that supports Thunderbolt technology to one of the Thunderbolt technology interface ports on the eSATA Hub. Plug the other end of the cable to a compatible Thunderbolt technology port on your Macintosh computer. The additional Thunderbolt technology port on the eSATA Hub may be used to daisy chain compatible devices. For example, you can attach one or more eSATA Hubs.

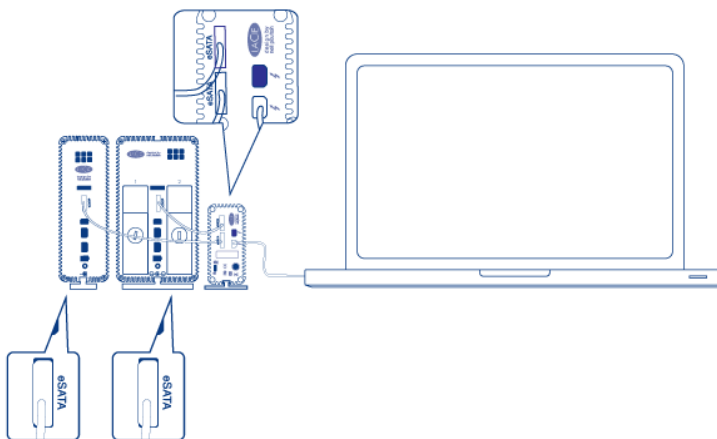


eSATA Hub

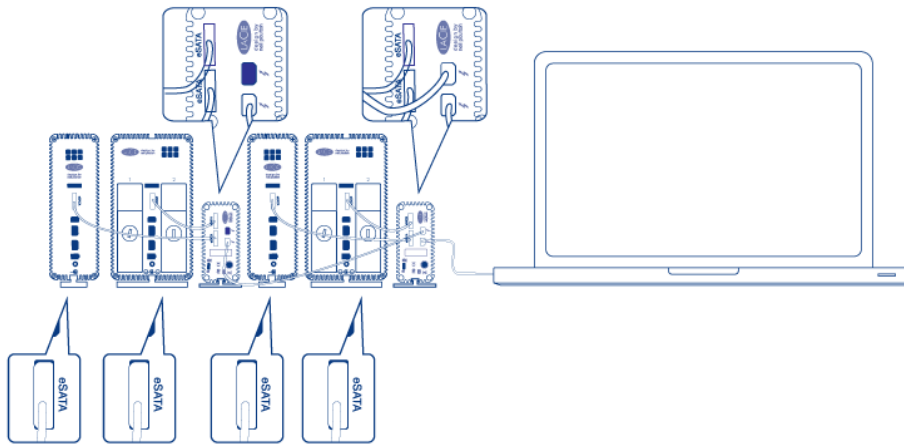


eSATA Hub daisy chain

2. Connect an eSATA cable to one of the eSATA interface ports on the eSATA Hub. Plug the other end of the cable to the eSATA port on your drive enclosure. You may attach a second eSATA enclosure to the additional eSATA port on the eSATA Hub. If you are daisy chaining eSATA Hubs, please connect eSATA enclosures to each eSATA Hub on the daisy chain during this step.

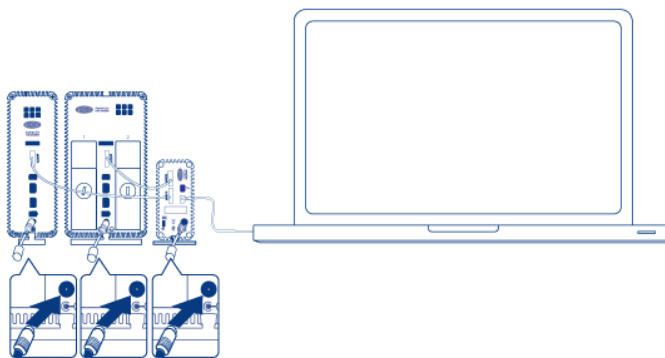


eSATA Hub

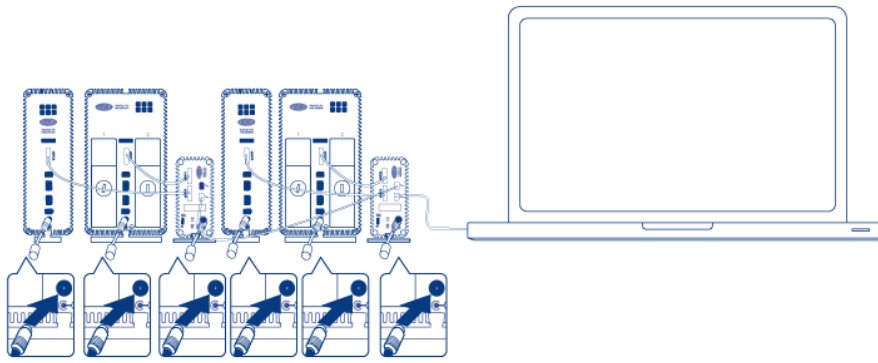


eSATA Hub daisy chain

3. Connect the included external power supply to a power outlet and to the eSATA Hub. If you are daisy chaining eSATA Hubs, please connect the included external power supply/supplies to each eSATA Hub on the daisy chain. Make certain to connect the power supplies to each eSATA enclosure connected to the eSATA Hub. The eSATA Hub will turn on automatically if power is available and it is connected to a Macintosh computer that supports Thunderbolt technology.

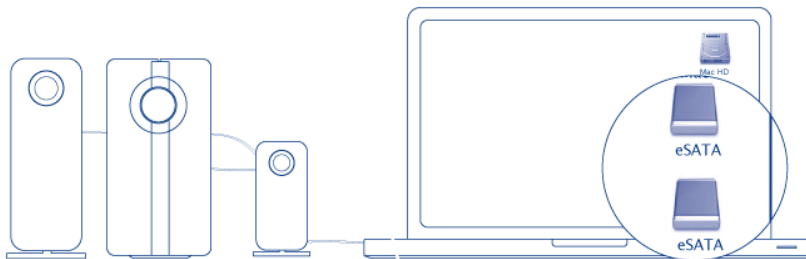


eSATA Hub

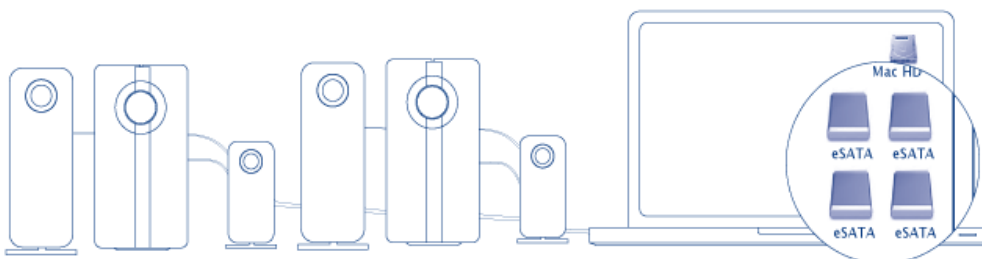


eSATA Hub daisy chain

4. Power on the eSATA drive enclosure(s) if necessary.
5. The disks will mount on the Mac desktop. You may use the Mac OS X Disk Utility to format and partition the volumes.



eSATA Hub



eSATA Hub daisy chain

Technical note: Thunderbolt technology supports seven devices on a daisy chain, including the computer. You can connect up to six eSATA Hubs for a total of 12 eSATA drive enclosures. The total disks will vary according to the amount of hard drives per enclosure.

Powered eSATA Enclosure Does Not Mount

Certain eSATA enclosures/drives may experience difficulty mounting onto the desktop when “hot plugged” into the eSATA Hub. For example, an eSATA enclosure connected to a powered eSATA Hub is not available on the desktop. Further, it cannot be mounted from the Mac Disk Utility. If you encounter such a case, please follow the instructions below:

1. Confirm that the eSATA enclosure power switch is set to **On** rather than **Auto**. Certain eSATA enclosures include an Auto mode that powers on the device when it receives a signal from the computer. This setting will effect performance when connected to the eSATA Hub.
2. Unmount ALL eSATA enclosures/drives that are attached to the eSATA Hub ([Unmounting the eSATA Volume\(s\)](#)). This includes any enclosure that may be connected to daisy-chained eSATA Hubs. **Make certain that open programs are not using the drives before unmounting them.**
3. Disconnect the Thunderbolt cable from the computer.
4. Wait five seconds.
5. Make certain that all eSATA enclosures connected to the eSATA Hub are powered on.
6. Reconnect the Thunderbolt cable to the computer.
7. All eSATA drives should be available for use.

UNMOUNTING THE DRIVE

In order to avoid file system corruption, it is important that you unmount the volume(s) before turning off the eSATA enclosures and/or the eSATA Hub. See [Unmounting the eSATA Volume\(s\)](#) for details.

INSTALL DRIVERS (WINDOWS ONLY)

Supported operating systems:

- Windows 7
- Windows 8

Windows users must install a special driver on their computers in order to use the Thunderbolt connection. Once the driver is installed, users can prepare the disks and RAID for a Windows environment.

Important info regarding RAID and Windows: RAID 0 and RAID 1 are available on the following versions of Windows:

- Windows 7 Professional/Enterprise/Ultimate
- Windows 8 and Windows 8 Pro

RAID cannot be configured using Windows 7 Standard and Home editions.

Important info regarding RAID and double-byte characters: RAID cannot be configured using a computer with double-byte characters in its name. This is often the case when using Chinese, Korean, and Japanese fonts. To configure RAID, use a name that contains only single-byte characters.

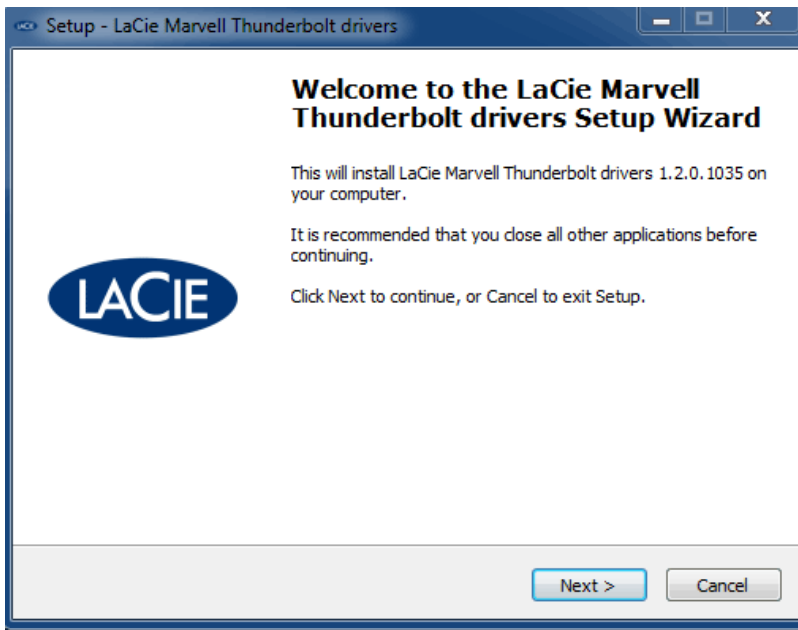
To download the installer for the LaCie Thunderbolt driver, please select your product below:

- [LaCie Little Big Disk Thunderbolt Series](#)
- [LaCie 2big Thunderbolt Series](#)
- [LaCie eSATA Hub Thunderbolt Series](#)

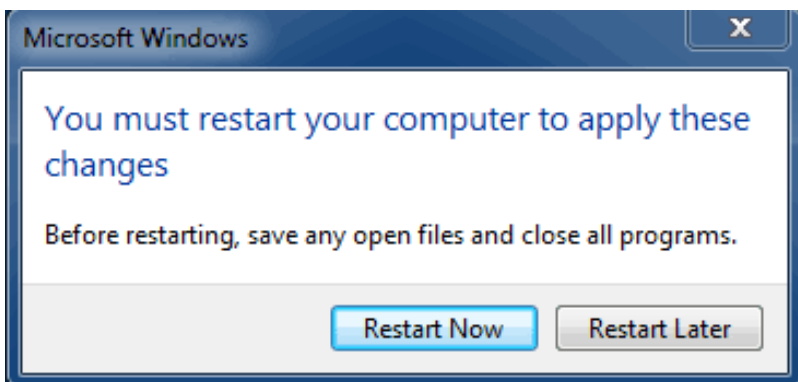
Order of operations: Please follow the order of operations as listed below. You must install the drivers **BEFORE** connecting the LaCie Thunderbolt device to your Windows computer.

PART 1

1. Unzip the installer downloaded from LaCie.
2. Double-click the executable file.
3. Follow the steps to complete the wizard.



4. When prompted, restart your computer.



5. Move on to Part 2.

PART 2

Since this LaCie product is originally configured in the HFS+ file format (for use on Mac) and RAID 0, all partitions must be erased, including the EFI partition. Windows Disk Management cannot erase the EFI partition so you'll need to run **Diskpart**, a separate Windows utility. For additional information on Diskpart, please click [here](#).

Disk 0 Basic 167.68 GB Online	System Reserved 100 MB NTFS Healthy (System, Active, Primary Partition)	(C:) 167.58 GB NTFS Healthy (Boot, Page File, Crash Dump, Primary Partition)	
Disk 1 Basic 476.94 GB Online	200 MB Healthy (EFI System Partition)	476.62 GB Healthy (Primary Partition)	128 MB Healthy (Primary Partition)
Disk 2 Basic 476.94 GB Online	200 MB Healthy (EFI System Partition)	476.62 GB Healthy (Primary Partition)	128 MB Healthy (Primary Partition)
CD-ROM 0 DVD (D:) No Media			

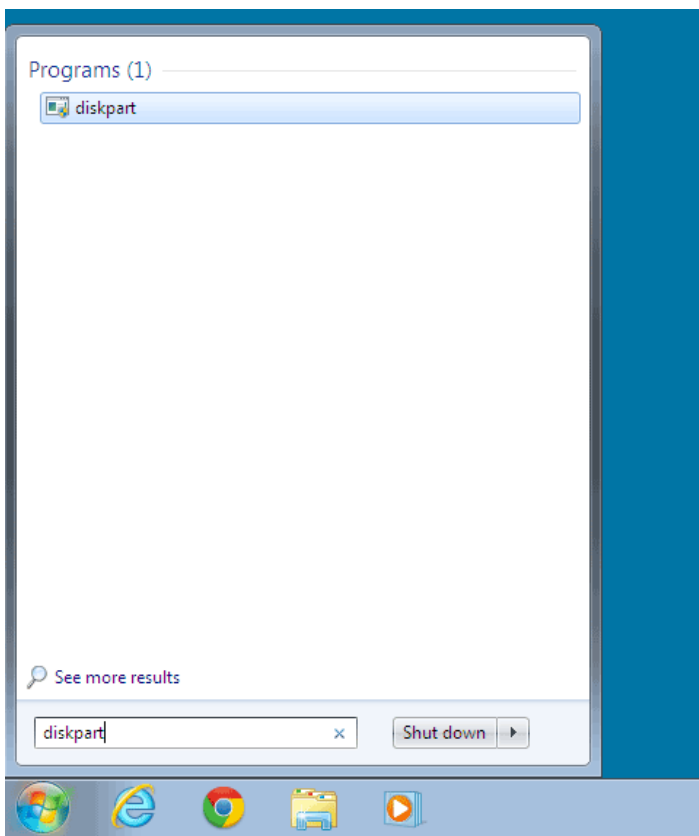
■ Unallocated ■ Primary partition

Important info: The operation below is data destructive. Before continuing, LaCie recommends that you:

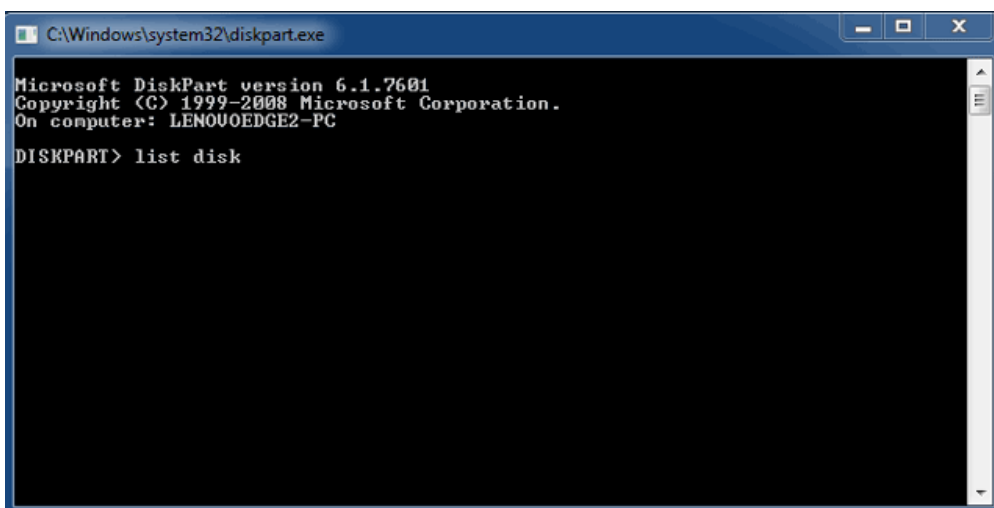
- Confirm that your Windows computer is compatible with Thunderbolt technology.
- **Back up all files stored on your LaCie Thunderbolt device** (if applicable). Please connect your LaCie Thunderbolt device to a Mac with a Thunderbolt port to back up your data.
- Disconnect all external disks from your Windows computer except for the LaCie Thunderbolt device. While Diskpart will not allow you to delete the System disk, selecting another external hard drive connected to your computer will delete all of its files. **LaCie is not responsible for lost data.**

The steps below are illustrated using a LaCie Little Big Disk, which contains two hard disks.

1. Connect the LaCie product to your compatible Windows computer via the Thunderbolt cable. If necessary, turn the device on.
2. Click on the Windows **Start** button.
3. Search for and launch **Diskpart**.



4. In the Diskpart prompt, type **list disk**.



5. Since the RAID was configured on a Mac, the LaCie disk partitions appear as *Foreign* (Disks in non-RAID configurations may appear as *Online* rather than *Foreign*). In this example, the first Foreign hard drive is *Disk 1*. The disk numbers will be different on Windows computers with more than one internal hard drive. Please make certain to locate the disk number(s) for your LaCie device then type **select disk n**. *n* is the number for the first LaCie hard drive, *1* in the screenshot below.

```
C:\Windows\system32\diskpart.exe
Microsoft DiskPart version 6.1.7601
Copyright (C) 1999-2008 Microsoft Corporation.
On computer: LENOVOEDGE2-PC

DISKPART> list disk

   Disk ###  Status         Size           Free           Dyn  Gpt
   -----  -
   Disk 0      Online          167 GB          0 B
   Disk 1      Foreign         476 GB          0 B      *
   Disk 2      Foreign         476 GB          0 B      *

DISKPART> select disk 1
```

6. Diskpart will confirm that your hard disk has been selected.

```
C:\Windows\system32\diskpart.exe
Microsoft DiskPart version 6.1.7601
Copyright (C) 1999-2008 Microsoft Corporation.
On computer: LENOVOEDGE2-PC

DISKPART> list disk

   Disk ###  Status         Size           Free           Dyn  Gpt
   -----  -
   Disk 0      Online          167 GB          0 B
   Disk 1      Foreign         476 GB          0 B      *
   Disk 2      Foreign         476 GB          0 B      *

DISKPART> select disk 1
Disk 1 is now the selected disk.
DISKPART>
```

7. To delete all partitions on the hard disk, type **clean**.

```
C:\Windows\system32\diskpart.exe
Microsoft DiskPart version 6.1.7601
Copyright (C) 1999-2008 Microsoft Corporation.
On computer: LENOVOEDGE2-PC

DISKPART> list disk

   Disk ###  Status         Size           Free           Dyn  Gpt
   -----  -
   Disk 0      Online          167 GB          0 B
   Disk 1      Foreign         476 GB          0 B      *
   Disk 2      Foreign         476 GB          0 B      *

DISKPART> select disk 1
Disk 1 is now the selected disk.
DISKPART> clean
```

8. Diskpart will confirm that your hard disk is clean, meaning that the partitions have been deleted.

```
C:\Windows\system32\diskpart.exe
Microsoft DiskPart version 6.1.7601
Copyright (C) 1999-2008 Microsoft Corporation.
On computer: LENOVOEDGE2-PC

DISKPART> list disk

   Disk ###  Status         Size           Free           Dyn    Gpt
   -----  -
   Disk 0      Online          167 GB          0 B
   Disk 1      Foreign         476 GB          0 B      *
   Disk 2      Foreign         476 GB          0 B      *

DISKPART> select disk 1
Disk 1 is now the selected disk.

DISKPART> clean
DiskPart succeeded in cleaning the disk.

DISKPART>
```

9. Repeat steps 5-8 for the remaining hard disks in your LaCie Thunderbolt device.

```
C:\Windows\system32\diskpart.exe
DISKPART> list disk

   Disk ###  Status         Size           Free           Dyn    Gpt
   -----  -
   Disk 0      Online          167 GB          0 B
   Disk 1      Foreign         476 GB          0 B      *
   Disk 2      Foreign         476 GB          0 B      *

DISKPART> select disk 1
Disk 1 is now the selected disk.

DISKPART> clean
DiskPart succeeded in cleaning the disk.

DISKPART> select disk 2
Disk 2 is now the selected disk.

DISKPART> clean
DiskPart succeeded in cleaning the disk.

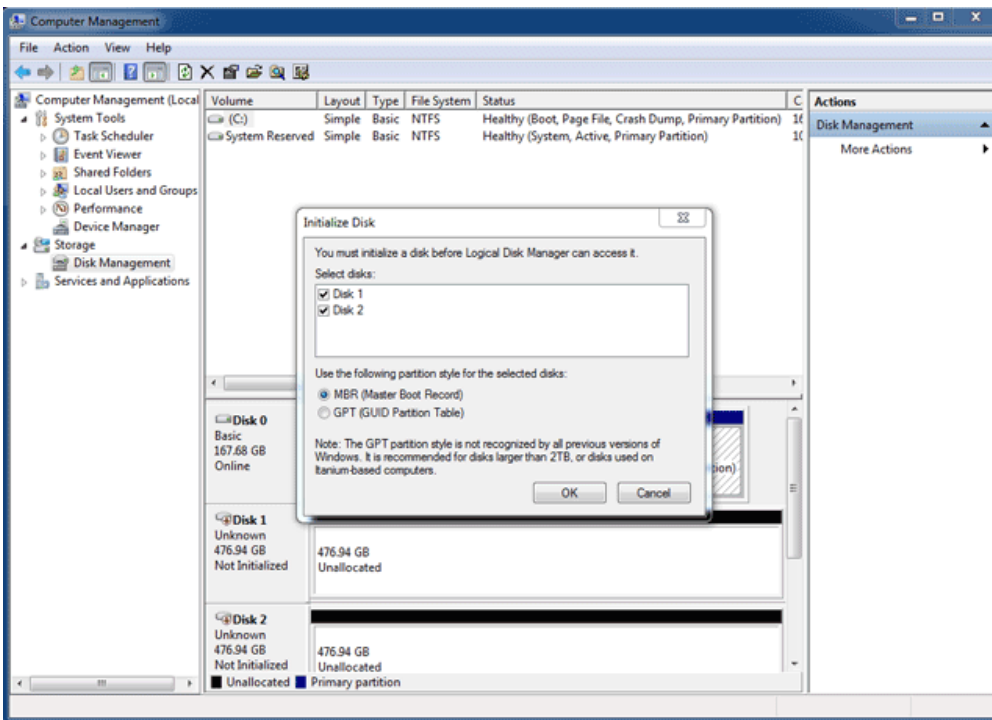
DISKPART>
```

10. Once all the HFS+ partitions have been deleted, close Diskpart then move on to Part 3.

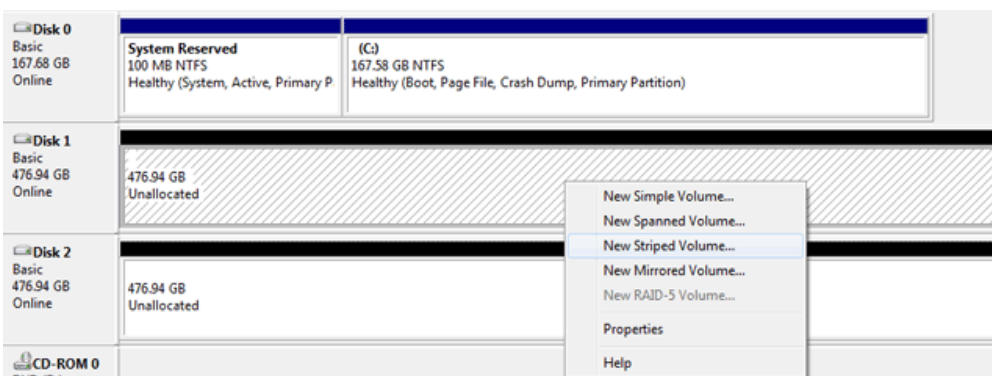
PART 3

If you successfully completed Part 2, then your LaCie Thunderbolt storage currently has no RAID set up. In Part 3, you'll set up a RAID array using Windows Disk Management.

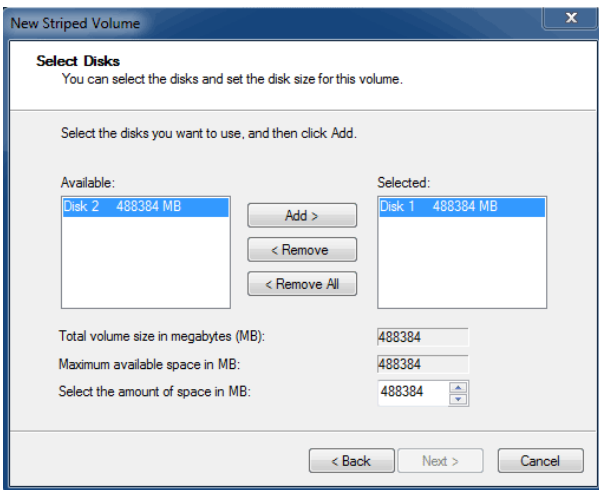
1. Right-click on **Computer** and choose **Manage**. From the Manage menu, select **Disk Management**.
2. A prompt may ask you to initialize new disks. This is normal following the use of Diskpart. Click **OK**.



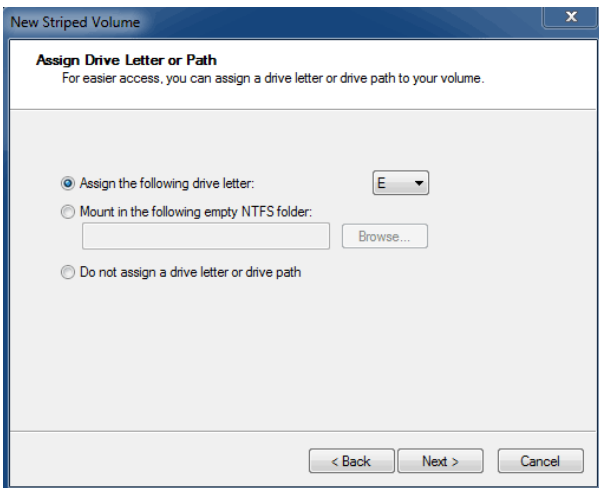
- Each of your LaCie Thunderbolt device's disks will be represented with a row in the lower part of the window. They should be labelled as **Unallocated**. Right-click on the first disk's row and select **New Striped Volume (RAID 0)** or **New Mirrored Volume (RAID 1)**.



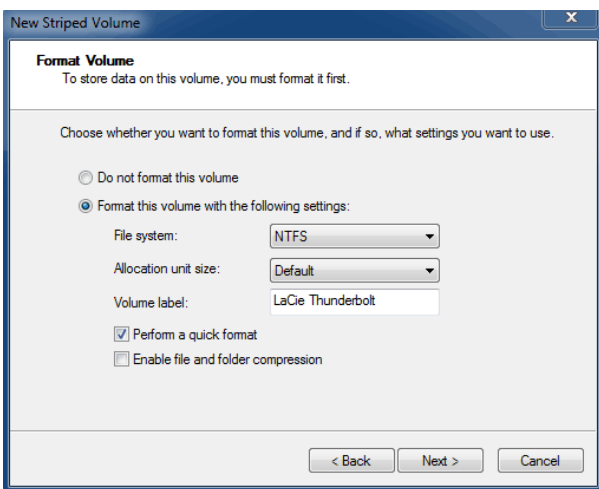
- The **New Striped Volume wizard** or the **New Mirrored Volume wizard** will open. Click **Next >**.
- Select the disk(s) you wish to add to the array and click the **Add >** button. Click **Next >** once all disks have been added.



6. Assign the volume a drive letter, then click **Next >**.

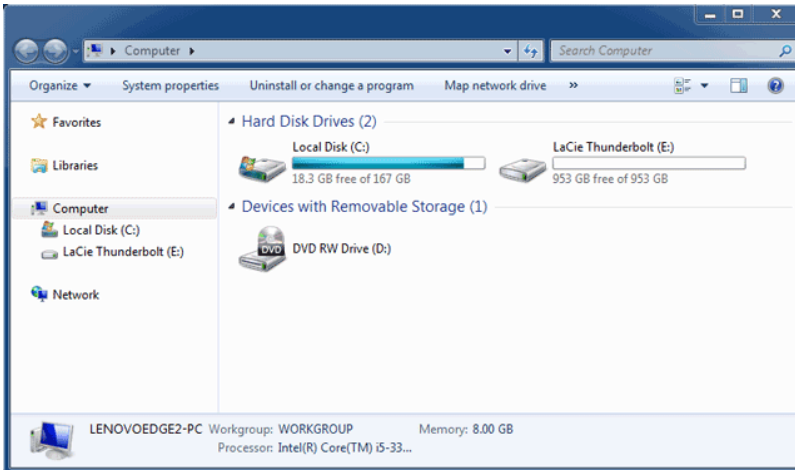


7. Name the volume and assign a file system (usually NTFS), then click **Next >**. To expedite the RAID configuration, keep the box checked next to *Perform a quick format*.



8. Review the summary in the next window then click **Finish** to format the hard disks.

9. A prompt will ask you to confirm the conversion of the disks from basic to dynamic. Click **Yes** to continue.
10. The volume will mount on your computer. If you created a mirrored (RAID 1) volume, it will take some time for the OS to sync the drives. However, the volume is immediately accessible.



* Thunderbolt and the Thunderbolt logo are trademarks of Intel Corporation in the U.S. and/or other countries.

UNMOUNTING THE ESATA VOLUME(S)

Thunderbolt technology devices are plug and play, allowing you to connect and disconnect them while the computer is running. To prevent potential disk problems, it is important to properly eject the eSATA storage volume(s).

1. Drag the eSATA storage volume(s) to the Trash. The Trash will turn into an Eject arrow. (The volume icon pictured is a generic Mac device icon. Your drives may be represented by different icons.)



2. When the volume icon disappears from the desktop, the eSATA enclosure can be disconnected from the eSATA Hub. If all the eSATA volumes have been ejected, you may also disconnect the eSATA Hub from the computer.

GETTING HELP

If you are having problems with your LaCie product, consult the table below for a list of available resources.

Order	Source	Description	Location
1	Quick Install Guide	Concise steps to follow for getting your product up and running	Either a printed leaflet or accessory box and included in the product box, or download PDF from the product page
2	Support Pages	Includes interactive troubleshooting topics for most common problems	www.lacie.com/support/ , select your product, then click the "Troubleshooting" tab
3	User Manual	Includes common troubleshooting topics	See Troubleshooting Topics below
4	Customer Support	Create an account on lacie.com , register your product, and fill out a support ticket	Create an account here: www.lacie.com/us/mystuff/login.htm?logout&rtm=mystuff

Note: LaCie is dedicated to providing high quality products that enrich the lives of our customers. To help LaCie offer the best customer support, we encourage you to create an account and register your product at www.lacie.com/us/mystuff/login.htm?logout&rtm=mystuff. You can give us important feedback as well as receive updated information on your LaCie device.

TROUBLESHOOTING TOPICS

Note: Interactive troubleshooting, a highly effective way to resolve problems with your product, is available from www.lacie.com/support/. Select your product, then click the “Troubleshooting” tab.

Problem: I do not see the eSATA volumes connected to my eSATA Hub Thunderbolt Series.

Q: Are there other Thunderbolt technology devices connected to the same port?

A: Disconnect all Thunderbolt devices except for the eSATA Hub. If the eSATA volumes appear on the desktop, determine which device on the Thunderbolt daisy chain is causing the problem.

Q: Does the icon/Do the icons for the eSATA volumes appear on the desktop?

A: The drive icon(s) for the eSATA volumes should appear on your desktop. Please confirm that the Finder preference for displaying external disks on the desktop is selected at **Finder > Preferences > General**.

Q: Is the eSATA Hub connected to a Macintosh computer that supports Thunderbolt technology?

A: The connection type for Thunderbolt technology on the Mac is shaped similar to the Mini DisplayPort. Please note that legacy Macs with Mini DisplayPorts do not support Thunderbolt technology peripherals such as the eSATA Hub.

Q: Did you follow the correct installation steps?

A: Review the installation steps ([Getting Connected](#)). Please make certain that both ends of the Thunderbolt technology and eSATA cables are firmly connected to their ports and that the devices are receiving power.

Q: I connected the eSATA Hub to my new Mac with an older Mini DisplayPort cable that I use for my monitors. Why can't I see the eSATA volumes on the desktop?

A: The eSATA Hub requires a cable specifically constructed for Thunderbolt technology. Go to www.lacie.com for more information on cables that support Thunderbolt technology.

Q: I connected a cable that supports Thunderbolt technology to my new Mac but the eSATA Hub does: (a) not power on and/or (b) not receive sufficient power.

A: The eSATA Hub receives power via the included power supply. See [Getting Connected](#).

Q: Are both ends of the Thunderbolt technology cable securely attached?

A:

- Only use a cable that supports Thunderbolt technology on a Mac.
- Check both ends of the Thunderbolt technology cable to make sure they are fully seated in their respective

ports.

- Try disconnecting the Thunderbolt technology cable then wait 10 seconds before reconnecting it.
- If the drive is still not recognized, restart your computer and try again.

Problem: I'm receiving file transfer error messages and Time Machine does not work.

Q: Did you get an "Error -50" message while copying to eSATA drives attached to the eSATA Hub?

A: When copying files or folders from a computer to a FAT32 volume, certain characters cannot be copied. These characters include, but are not limited to:

? < > / \ :

Since it does not offer optimal performance, LaCie does not recommend using the FAT32 file system with your eSATA drives. Please consider formatting the drives as HFS+ Journaled. Additionally, Time Machine is only compatible with disks formatted in HFS+ or HFS+ Journaled.

Problem: The disk space does not seem right.

Q: I just threw a lot of files into the Trash from my eSATA volume. Why don't I see more space to copy new files?

A: Disk space will not be reclaimed until the file is erased. To remove the files forever:

- Click the **Trash** icon in the Apple Dock.
 - A Finder window will open. Right-click **Empty** in the upper right.
-

Q: Why is the volume capacity less than advertised on the eSATA drives?

A: After formatting, the available capacity of a drive will show less than advertised on the box. The difference is based upon how capacity is viewed by the operating system. For example, a hard drive that can store 500,000,000,000 bytes is divided by 1,000,000,000 to equal 500GB. This is the actual capacity listed on the manufacturer's box. The operating system uses slightly different math, dividing 500,000,000,000 by 1,073,741,824 to equal 466GB.

PRECAUTIONS

Caution: It is essential that you use only the power supply shipped with your product, since it is a shielded-type power cord that meets FCC emission limits as well as to prevent interference to the nearby radio and television reception.

Caution: Modifications not authorized by the manufacturer may void the user's authority to operate this device.

Important info: Any loss, corruption or destruction of data while using a LaCie device and/or hard drive is the sole responsibility of the user, and under no circumstances will LaCie be held liable for the recovery or restoration of this data. To help prevent the loss of your data, LaCie highly recommends that you keep TWO copies of your data; one copy on your external hard disk, for instance, and a second copy either on your internal hard disk, another external hard disk, or some other form of removable storage media. If you would like more information on backup, please refer to our website.

Important info: 1TB (Terabyte) = 1,000GB. 1GB = 1000MB. 1MB = 1,000,000 Bytes. Total accessible capacity varies depending upon operating environment (typically up to 10% less per TB).

HEALTH AND SAFETY PRECAUTIONS

- Only qualified persons are authorized to carry out maintenance on this device.
- Read this User Manual carefully and follow the correct procedure when setting up the device.
- Do not open a LaCie device or attempt to disassemble or modify it. Never insert any metallic object into the device as you risk severe electrical shock, fire, short-circuiting, or dangerous emissions. The LaCie device contains no user-serviceable parts. If it appears to be malfunctioning, have it inspected by a qualified LaCie Technical Support representative.
- Never expose your device to rain, or use it near water, or in damp or wet conditions. Never place objects containing liquids on the LaCie device, as they may spill into its openings. Doing so increases the risk of electrical shock, short-circuiting, fire, or personal injury.

GENERAL USE PRECAUTIONS

- Power requirements 100-240 V~, 50-60 Hz, (supply voltage fluctuations not exceeding $\pm 10\%$ of the nominal and transient over-voltages according to over-voltage category II).
- Do not expose the LaCie device to temperatures outside the range of 5° C to 30° C (41° F to 86° F); or to operational humidity beyond 10-80%, non-condensing, or non-operating humidity beyond 10-90%, non-condensing. Doing so may damage the LaCie device or disfigure its casing. Avoid placing your LaCie

device near a source of heat or exposing it to sunlight (even through a window). Inversely, placing your LaCie device in an environment that is too cold may damage the unit.

- Rated cooling for altitudes up to 2000 meters.
- If your device features a power cable, always unplug it from the electrical outlet if there is a risk of lightning or if it will be unused for an extended period of time. Otherwise, there is an increased risk of electrical shock, short-circuiting or fire.
- Use only the power supply shipped with the device (if applicable).
- Do not use the LaCie device near other electrical appliances such as televisions, radios or speakers. Doing so may cause interference which will adversely affect the operation of the other products.
- Do not place the LaCie device near sources of magnetic interference, such as computer displays, televisions or speakers. Magnetic interference can affect the operation and stability of your LaCie device.
- Never use excessive force on your LaCie device. If you detect a problem, consult the troubleshooting section in this manual.
- Protect your LaCie device from excessive exposure to dust during use or storage. Dust can build up inside the device, increasing the risk of damage or malfunction.
- Never use benzene, paint thinners, detergent or other chemical products to clean the outside of the enclosure of your LaCie device. Such products will disfigure and discolor the casing. Instead, use a soft, dry cloth to wipe the device.

WARRANTY INFORMATION

LaCie offers first-rate service and support through our generous three-tiered warranty policy. Our 1-, 2-, 3-, and 5-year policies include comprehensive, complimentary web-based resources, expert in-house technical support, and worldwide repair and/or replacement coverage. To benefit from this warranty, please contact LaCie Support at www.lacie.com/us/support where you can find online support and contact information. You may also contact representatives at the original point of purchase who will be able to help guide you.

Standard warranties vary depending on the product. To verify your product's warranty status and to see which standard warranty is included with your product, type in your product's serial number at www.lacie.com/us/support. If no warranty is listed under your product's name, this means that the warranty has expired.

WARRANTY UPGRADES

If you wish to extend your warranty coverage, you can purchase Silver, Gold, or Platinum Care or Advanced Exchange. For details, see www.lacie.com/warranties.

LEGAL INFORMATION

A standard LaCie limited warranty is included with all products. Please read the terms and conditions below.

LaCie Limited Warranty Policy

LaCie ("LaCie") warrants, to the original purchaser, that this equipment shall be free of defects in materials and workmanship for a period of one (1), two (2), three (3), or five (5) years, depending on the model, from LaCie's date of original shipment when the equipment is used normally and is properly serviced when needed. If you discover a defect covered by the warranty set forth above, your sole and exclusive remedy will be for LaCie, in its sole discretion to (i) repair or replace the product at no charge to you; or, if a repaired unit or replacement product is not available, (ii) to refund the current market value of your product. You acknowledge and agree that replacement product, at the sole option of LaCie, may be a new product or a remanufactured product. In order to receive the remedy set forth above, you must return the product during the warranty period and include with each returned product (i) a copy of your original purchase invoice to verify your warranty; (ii) a Return Material Authorization number; (iii) your name, address and telephone number; (iv) a copy of the bill of sale bearing the appropriate LaCie serial numbers as proof of date of original retail purchase; and (v) a description of the problem. The customer must pay all transportation costs for a returned product. The product will need to be returned to LaCie within the country of original retail purchase. This warranty applies only to hardware products; LaCie software, media, and manuals are licensed and warranted pursuant to separate written agreement. This warranty does not apply if the product has been misused or has been damaged by accident, abuse, misuse, or misapplication; if it has been modified without permission of LaCie; or if any LaCie serial number has been removed or defaced. If a customer has purchased a LaCie Advance Care Option (ACO) to go with this equipment, the ACO shall be valid for three (3) years from activation.

EXCEPT FOR THE LIMITED WARRANTY SET FORTH ABOVE, ALL PRODUCTS ARE SOLD "AS IS" AND LACIE EXPRESSLY DISCLAIMS ALL WARRANTIES OF ANY KIND, WHETHER EXPRESS, IMPLIED OR STATUTORY, INCLUDING THE IMPLIED WARRANTIES OF MERCHANTABILITY, NONINFRINGEMENT AND FITNESS FOR A PARTICULAR PURPOSE. WITHOUT FURTHER LIMITING THE GENERALITY OF THE FOREGOING, DOES NOT WARRANT (1) THE PERFORMANCE OR RESULTS OBTAINED FROM USING THIS PRODUCT, (2) THAT THE PRODUCT IS APPROPRIATE FOR THE CUSTOMER'S PURPOSES, (3) THE MANUAL IS ERROR FREE, OR (4) THAT NO DATA WILL BE LOST WHILE USING THE PRODUCT. THE ENTIRE RISK AS TO THE RESULTS AND PERFORMANCE IS ASSUMED BY THE CUSTOMER. THE WARRANTY AND REMEDIES SET FORTH ABOVE ARE EXCLUSIVE AND IN LIEU OF ALL OTHERS, ORAL OR WRITTEN, EXPRESS OR IMPLIED.

EXCLUSIONS AND LIMITATIONS

This Limited Warranty applies only to hardware products manufactured by or for LaCie that can be identified by the "LaCie" trademark, trade name, or logo affixed to them. The Limited Warranty does not apply to any non-LaCie hardware products or any software, even if packaged or sold with LaCie hardware. Manufacturers, suppliers, or publishers, other than LaCie, may provide their own warranties to the end user purchaser, but LaCie, in so far as permitted by law, provides their products "as is". Software distributed by LaCie with or without the LaCie brand name (including, but not limited to system software) is not covered under this Limited Warranty. Refer to the licensing agreement accompanying the software for details of your rights with respect to its use.

LaCie does not warrant that the operation of the product will be uninterrupted or error-free. LaCie is not responsible for damage arising from failure to follow instructions relating to the product's use. This warranty does not apply: (a) to consumable parts, unless damage has occurred due to a defect in materials or workmanship; (b) to cosmetic damage, including but not limited to scratches, dents and broken plastic on ports; © to damage caused by use with non-LaCie products; (d) to damage caused by accident, abuse, misuse, flood, fire, earthquake or other external causes; (e) to damage caused by operating the product outside the permitted or intended uses described by LaCie; (f) to damage caused by service (including upgrades and expansions) performed by anyone who is not a representative of LaCie or a LaCie Authorized Service Provider; (g) to a product or part that has been modified to alter functionality or capability without the written permission of LaCie; or (h) if any LaCie serial number on the product has been removed or defaced.

No LaCie dealer, agent, or employee is authorized to make any modification, extension, or addition to this warranty.

Any loss, corruption or destruction of data while using a LaCie drive is the sole responsibility of the user, and under no circumstances will LaCie be held liable for the recovery or restoration of this data. To help prevent the loss of your data, LaCie highly recommends that you keep TWO copies of your data; one copy on your external hard disk, for instance, and a second copy either on your internal hard disk, another external hard disk or some other form of removable storage media. LaCie offers a complete line of CD and DVD drives. If you would like more information on backup, please refer to our website.

LACIE IS NOT RESPONSIBLE FOR SPECIAL, INCIDENTAL, OR CONSEQUENTIAL DAMAGES RESULTING FROM ANY BREACH OF WARRANTY, OR UNDER ANY LEGAL THEORY, INCLUDING LOST PROFITS, DOWNTIME, GOODWILL, DAMAGE TO OR REPLACEMENT OF EQUIPMENT AND PROPERTY, AND ANY COSTS OF RECOVERING, REPROGRAMMING, OR REPRODUCING ANY PROGRAM OR DATA STORED IN OR USED WITH LACIE PRODUCTS EVEN IF IT HAS BEEN ADVISED OF THE POSSIBILITY OF SUCH DAMAGES.

Some states do not allow the exclusion or limitation of implied warranties or liability for incidental or consequential damages, so the above limitation or exclusion may not apply to you. This warranty gives you specific legal rights, and you may have other rights, which vary from state to state.

Your opening of your package, your use of the product, or your return of the enclosed Registration Card acknowledges that you have read and agree to the terms of this Agreement. You further agree that it is the complete and exclusive state of the agreement between us and supersedes any proposal or prior agreement, oral or written, and any other communications between us relating to the subject matter of this Agreement.

Read carefully all information related to warranty and precautions of use of your new LaCie product in the user manual.

For products purchased in the United States, you may contact LaCie at 7555 Tech Center Drive, Tigard, Oregon 97223 USA. Email: sales@lacie.com. Website: www.lacie.com. Customer service: 503-844-4503.

Service DOA

On rare occasions, a newly purchased LaCie product may be delivered in non-working order. We are working to avoid these issues, but unfortunately, these situations may arise from time to time. Within the 15 calendar days of purchase, should you experience an issue with your new LaCie product, we ask you to return the product to the place where it was originally bought. You will be required to give a proof of purchase.

Customer Warning

Please be sure to back up your data before returning your drive to LaCie for repair. LaCie cannot under any circumstances guarantee the integrity of data remaining on a returned drive. We make no provisions for data recovery and cannot be held liable for any data loss on drives or media returned to LaCie.

All products returned to LaCie must be securely packaged in their original box and shipped with postage prepaid, except for Products registered under the Advance Care Option.

NOTE TO AUSTRALIAN CUSTOMERS

Our goods come with guarantees that cannot be excluded under the Australian Consumer Law. You are entitled to a replacement or refund for a major failure and for compensation for any other reasonably foreseeable loss or damage. You are also entitled to have the goods repaired or replaced if the goods fail to be of acceptable quality and the failure does not amount to a major failure.

Contact us:

LaCie Australia, 6/151 Beauchamp Rd, Matraville NSW 2036 AUSTRALIA

Phone: 02 8063 3711

Email: info.au@lacie.com

For fast technical support, create a support ticket after registering your product at www.lacie.com/au/register.

LEGAL INFORMATION

COPYRIGHTS

Copyright © 2015 LaCie. All rights reserved. No part of this publication may be reproduced, stored in a retrieval system, or transmitted in any form or by any means, electronic, mechanical, photocopying, recording or otherwise, without the prior written consent of LaCie.

CHANGES

The material in this document is for information only and subject to change without notice. While reasonable efforts have been made in the preparation of this document to assure its accuracy, LaCie assumes no liability resulting from errors or omissions in this document, or from the use of the information contained herein. LaCie reserves the right to make changes or revisions in the product design or the product manual without reservation and without obligation to notify any person of such revisions and changes.

FEDERAL COMMUNICATION COMMISSION INTERFERENCE STATEMENT

This equipment has been tested and found to comply with the limits for a Class B digital device, pursuant to Part 15 of the FCC Rules. These limits are designed to provide reasonable protection against harmful interference in a residential installation. This equipment generates, uses and can radiate radio frequency energy and, if not installed and used in accordance with the instructions, may cause harmful interference to radio communications. However, there is no guarantee that interference will not occur in a particular installation. If this equipment does cause harmful interference to radio or television reception, which can be determined by turning the equipment off and on, the user is encouraged to try to correct the interference by one of the following measures:

1. Reorient or relocate the receiving antenna.
2. Increase the separation between the equipment and receiver.
3. Connect the equipment into an outlet on a circuit different from that to which the receiver is connected.
4. Consult the dealer or an experienced radio/TV technician for help.

FCC Caution: Any changes or modifications not expressly approved by the party responsible for compliance could void the user's authority to operate this equipment.

This device complies with Part 15 of the FCC Rules. Operation is subject to the following two conditions: (1) This device may not cause harmful interference, and (2) this device must accept any interference received, including interference that may cause undesired operation.

Important info: FCC Radiation Exposure Statement: This equipment complies with FCC radiation exposure limits set forth for an uncontrolled environment. This equipment should be installed and operated with minimum distance 20 cm between the radiator & your body.

This transmitter must not be co-located or operating in conjunction with any other antenna or transmitter. The availability of some specific channels and/or operational frequency bands are country dependent and are

firmware programmed at the factory to match the intended destination. The firmware setting is not accessible by the end user.

WEEE



This symbol on the product or on its packaging indicates that this product must not be disposed of with your other household waste. Instead, it is your responsibility to dispose of your waste equipment by handing it over to a designed collection point for the recycling of waste electrical and electronic equipment. The separate collection and recycling of your waste equipment at the time of disposal will help to conserve natural resources and ensure that it is recycled in a manner that protects human health and the environment. For more information about where you can drop off your waste equipment for recycling, please contact your local city office, your household waste disposal service, or the shop where you purchased the product.

MANUFACTURER'S DECLARATION FOR CE CERTIFICATION



We, LaCie, solemnly declare that this product conforms to the following European standards: Electromagnetic Compatibility Directive (2004/108/EC); Low-Voltage Directive: 2006/95/EC

TRADEMARKS

Apple, Mac, Time Machine, and Macintosh are registered trademarks of Apple Computer, Inc. Microsoft, Windows XP, Windows Vista, and Windows 7 are registered trademarks of Microsoft Corporation. Other trademarks mentioned in this manual are the property of their respective owners.

CANADA COMPLIANCE STATEMENT

This Class B digital apparatus meets all requirements of the Canadian Interference-Causing Equipment Regulations.

CAN ICES-3 (B)/NMB-3(B)

JAPAN COMPLIANCE STATEMENT

This is a Class B product based on the standard of the Voluntary Control Council for Interference from Information Technology Equipment (VCCI). If this is used near a radio/TV receiver, it may cause radio interference. Install the equipment according to the manual. This statement does not apply to the LaCie CloudBox.